

POWERFLEX®

PART NUMBER
PFR3-1114

DESCRIPTION
UPPER ARM FRONT AND REAR BUSHES

INSTALLATION GUIDE

Contents (parts per pack):

- | | |
|-----------------------------|---|
| 4 x PFR3-1114 Bushes | 1 x PTFE/Silicone Grease |
| 4 x Stainless Steel Sleeves | 4 x Zinc Plated Mild Steel Outer Shells |

Please read the complete fitting instructions and check package components before fitment. These fitting instructions are to be used as a guide and in conjunction with workshop manual.

It is recommended that:

- all work to be carried out by a licensed technician;
- all safety precautions adhered to;
- wheel alignment to be checked and adjusted as required after any suspension work.
- All fasteners must be tensioned to manufacturer's torque settings.

Fitting Instructions:

1. Remove the original bushes and outer shells from the arm, and clean away any dirt and corrosion.
2. File away any sharp edges using a rounded file.
3. Using a workshop press or a vice, press the Outer Shells into the vacant holes of the arm. When inserting, ensure that the outer lip of the Outer Shell is facing the outside of the arm, as shown in Figure 1.

Note: when inserting the Outer Shells, a supporting block will need to be inserted into the void of the arm to stop it from bending under the force of the press.

4. Insert the PFR3-1114 Bushes into the vacant holes of the Outer Shells, ensuring the lip of the Bushes is facing the outside of the arm.
5. Apply some of the supplied grease to the bores of the Bushes and insert the Stainless Steel Sleeves into the bore, until they sit flush.
6. Refit the arm to the subframe, remembering to tension all hardware to manufacturers recommended torque settings.

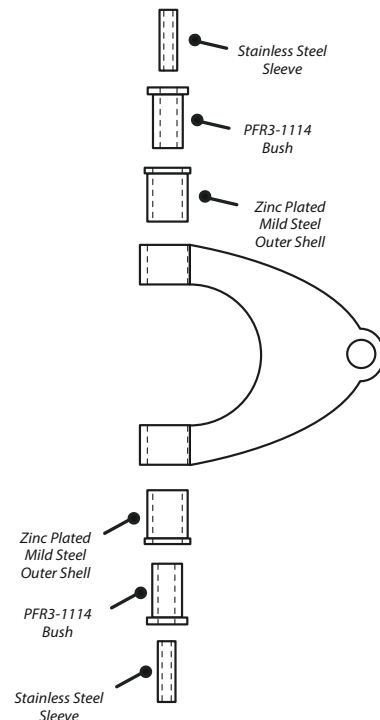


Figure 1

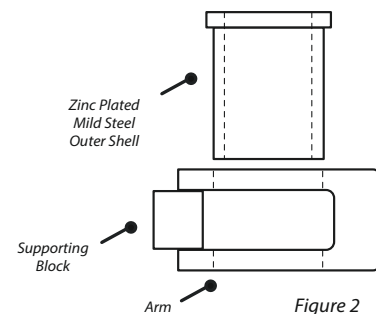


Figure 2