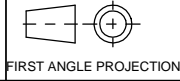


A2 INSTALLATION DRAWING

If this document is printed in hardcopy, it is for information use only and therefore is not subject to updating controls. Always refer to viewer for latest issue.



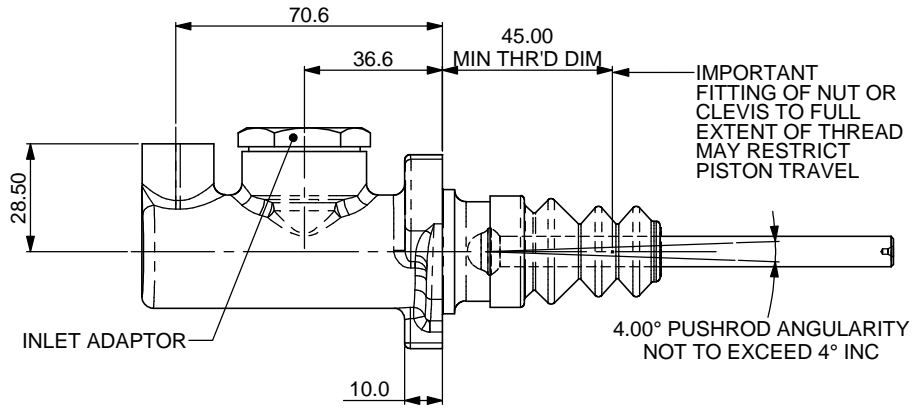
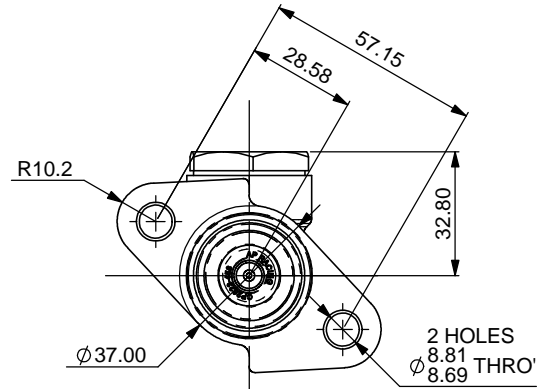
THIS DRAWING IS CONFIDENTIAL AND IS SUPPLIED ON THE EXPRESS CONDITION THAT IT SHALL NOT BE LOANED OR COPIED OR DISCLOSED TO ANY OTHER PERSON OR USED FOR ANY OTHER PURPOSE WITHOUT THE WRITTEN CONSENT OF AP RACING LTD.



AP Racing
Wheler Road
Coventry
CV3 4LB

Tel: +44 024 7663 9595
Fax: +44 024 7663 9559
e-mail: sales@ap racing.co.uk
Web site: http://www.ap racing.com

© AP Racing Ltd. 2005



| AVAILABLE SIZES OF CYLINDER | |
|-----------------------------|----------------|
| PART NUMBER | BORE SIZE |
| SMALL BORE CYLINDERS | |
| CP4623-88 | Ø14 |
| CP4623-89 | Ø15 |
| CP4623-90 | Ø15.9 (5/8") |
| CP4623-905 | Ø16.8 |
| CP4623-91 | Ø17.8 (0.70") |
| CP4623-92 | Ø19.1 (3/4") |
| CP4623-93 | Ø20.6 |
| CP4623-94 | Ø22.2 |
| LARGE BORE CYLINDERS | |
| CP4623-95 | Ø23.8 (15/16") |

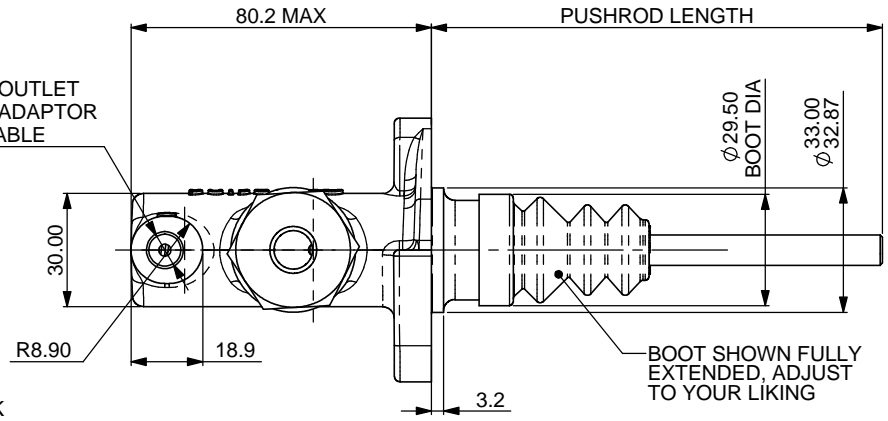
GENERAL DESCRIPTION:
LIGHT WEIGHT MASTER CYLINDER FOR USE IN ALL CAR APPLICATIONS. CP4623 MASTER CYLINDER IS SUPPLIED WITH M12 x 1.0 THREADED INLET FOR ALTERNATIVE INLETS & RESERVOIR OPTIONS SEE SHEET 2.

WEIGHT.....TBA (LB)
FULL STROKE.....25.4 (1.0")
TRAVEL TO CUT-OFF
SHORT.....0.68 TO 1.09 (0.027" TO 0.043")
HYDRAULIC THREADS.....M12 x 1.0 INLET
M10 x 1.0 OUTLET
BODY MATERIAL.....ALUMINIUM ALLOY
TYPICAL APPLICATIONS.....FOR USE IN ALL CARS

INSTALLATION DIMENSIONS FOR 15/16" BORE MASTER CYLINDERS DIFFER FROM OTHER SIZES DUE TO LARGER BOOT. PARTICULAR NOTE SHOULD BE TAKEN OF THE DIFFERENT DIMENSION FROM THE MOUNTING FLANGE TO THE PUSHROD.

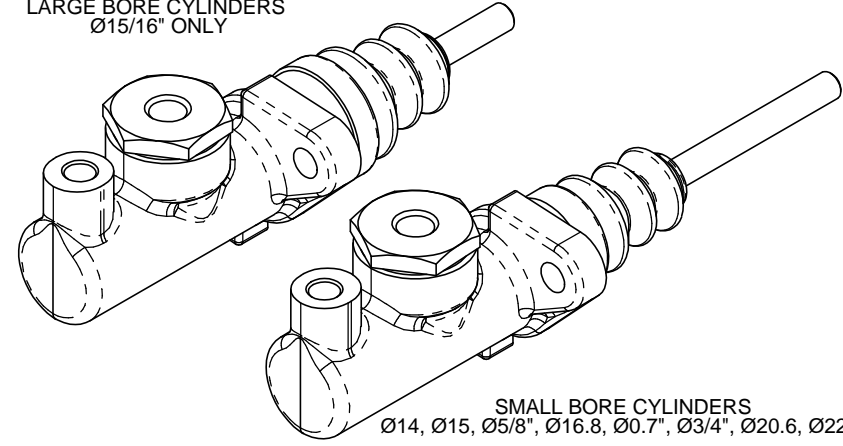
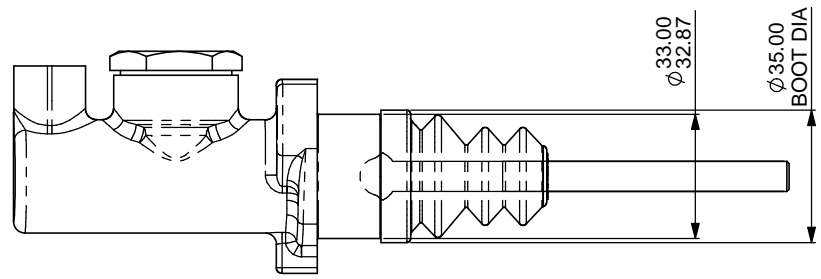
FOR REPAIR KITS ADD RK TO BASIC CP2623 EQUIVALENT PART NUMBER, E.G. CP4623-91 ASSEMBLY USES CP2623-91RK

M10 x 1.0 OUTLET AEROQUIP ADAPTOR AVAILABLE



LARGE BORE CYLINDERS Ø15/16" ONLY

INSTALLATION DIMENSIONS FOR Ø15/16" CYLINDERS



SMALL BORE CYLINDERS Ø14, Ø15, Ø5/8", Ø16.8, Ø0.7", Ø3/4", Ø20.6, Ø22.2

| Issue No. | Date & No. | Alterations | | Zone | Initials |
|-----------|----------------|--|---------------------------|------|----------|
| | | Particulars | | | |
| 16 | 17/10/02 B3471 | MIN THR'D DIM'S ADDED | IMPORTANT NOTE ALSO ADDED | | SAT |
| 17 | 25/02/03 B3438 | NOTES AND CHART MODIFIED TO CALL NEW 16.8mm BORE SIZE. INLET TYPE 'A' & 'D' PART No's CORRECTED. 57.15 WAS 57.2 28.57 WAS 28.8 | | | DRA |
| 18 | 17/03/04 B3430 | PUSHROD EXTENTION NOTE ADDED | | | SAT |
| 19 | 07/01/08 B5064 | INLET TYPE C RESERVOIRS MODIFIED TO MODERN CP4709 TYPE. WAS CP4623 TYPE. OBSOLETE TYPES REMOVED. HEIGHT DATA CHANGED TO COMMON DATUM (C) AS PER OTHER INLET TYPES. PICTORIAL- MAIN BOOT CHANGED TO NEW TYPE. | | | DRA |
| 20 | 28/09/09 B5697 | NOTES MODIFIED TO REMOVE DETAILS OF EXTRA SHORT CUT OFF OPTION | | | SAT |
| 21 | 25/02/15 B7242 | DRAWING UPDATED WITH NEW FORMAT SHEET 2 ADDED. VIEWS UPDATED TO SHOW DETAILS OF FORGED BODIES. CP4623-96, 1.0" ASSEMBLY REMOVED. BOOT DIA'S Ø29.50 & Ø35.00 ADDED | | | SAT |

| | |
|--|--------------|
| SCALE 1:1 | SHEET 1 OF 2 |
| DRAWN Steve Thomas | APPROVED |
| DERIVED FROM | |
| TITLE OFFSET FLANGE EXTRA SHORT CYLINDER | |
| DRG NO. CP4623-1CD | |